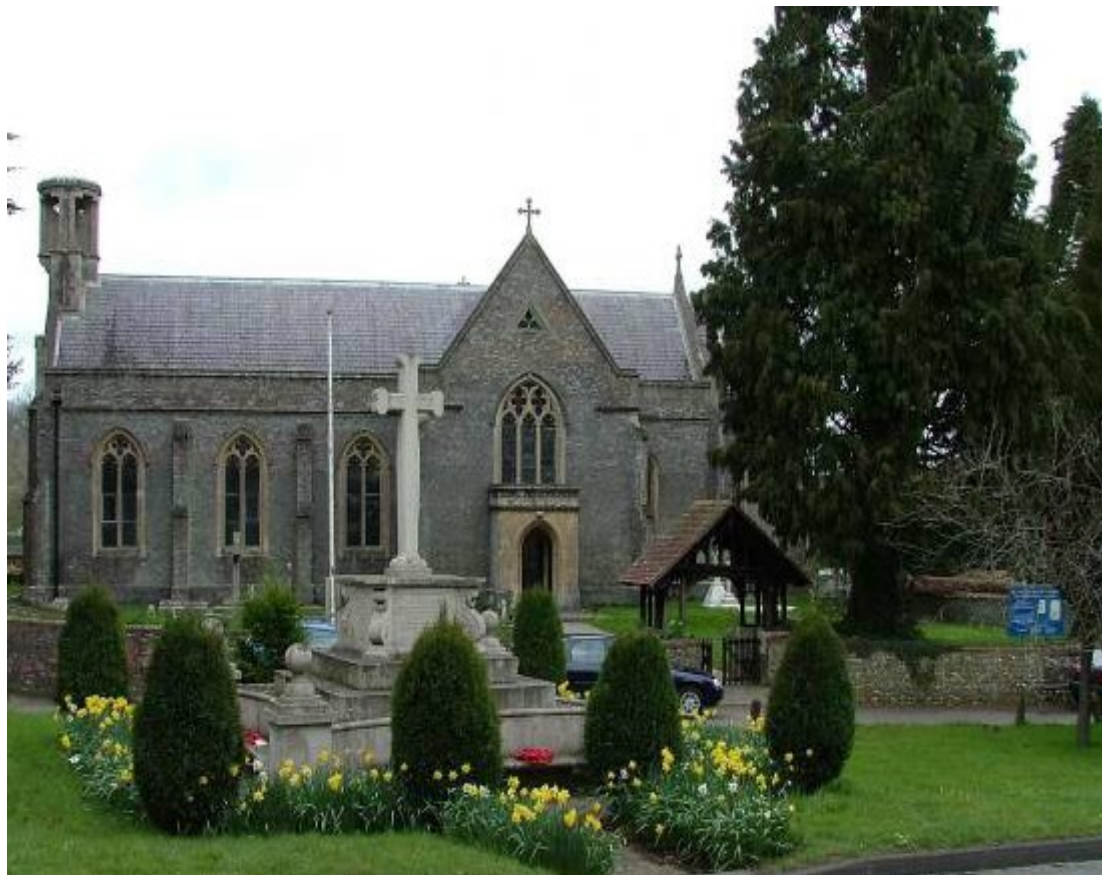


**Otterbourne Village
Welcome Pack
St. Matthew's Church
Otterbourne**



Welcome to Otterbourne

On behalf of The Parish Council, let me welcome you to Otterbourne. We hope that the information given in this Welcome Pack will help you to settle more comfortably into your new home and the village.

Neighbours usually become your first contacts and advisors, but please feel free to telephone any of the Councillors or Clerk for information and help. As residents, we trust that you will quickly become and feel part of this community. We have tried to gather as much useful local information as possible, but would be pleased to hear any suggestions or improvements you might have about this pack.

More local information is available via our website and through its links to other local websites. Also the website carries the most up to date version of this document.

We wish you many happy years in Otterbourne and hope that you will join with us in creating a vibrant and friendly community.

Chairman of the Parish Council

Contents	Page
History of Otterbourne	3
Parish Map	4
Your Parish Councillors	5
Parish Council Meetings	5
Other Village Representatives	6
St Matthew's Parish Church	6
Other religious establishments	6
Health facilities	7
Shopping	7
Education	8
Emergency Services	8
Post Office	8
Public Transport	9
Sport and Recreation	9
Library	10
Otterbourne Clubs and Societies	10
Recycling and Civic Amenity Sites	10
Plans for the Village	10
Nearby Supermarkets and Large Stores	11
Local Attractions	11

History of Otterbourne

The first historic record of Otterbourne can be found in the Domesday Book, compiled and published at Winchester in the year 1086, on the direction of William I. The Domesday survey contained a comprehensive inventory of each settlement, including a reference to whoever held it before the coming of the Normans. England was divided into administrative areas known as Hundreds. Otterbourne is recorded as being part of the Buddlesgate Hundred: a somewhat fragmented area centred somewhere north west of Winchester. In 1086 it was held by Ralph of Mortimer and was clearly an extensive settlement, having land for 8 ploughs, 50 acres of meadowland, a fishery and a church. Prior to the Norman Conquest, Otterbourne (Otterburne) was held by one Cheping of whom we know nothing. However, there was a thriving Saxon community before the coming of Ralph of Mortimer. The location of the Saxon/Norman settlement is likely to have been in what is presently known as Kiln Lane although whether the site was on that of the old churchyard is open to speculation. Recent archaeological studies of the church site have revealed little that is earlier than the 13th Century.

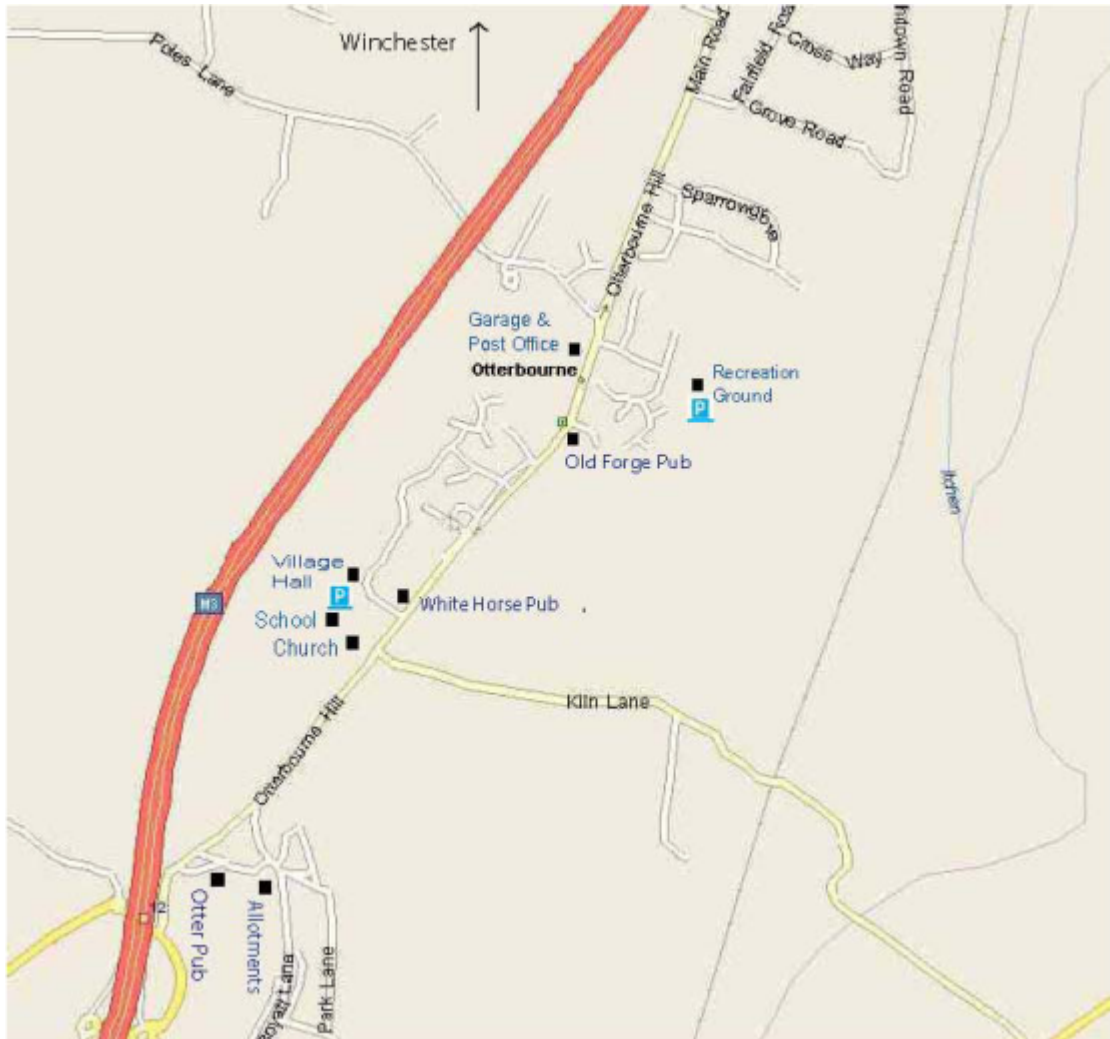
Otterbourne has also had associations with a number of prominent personalities: Charlotte M. Yonge, Victorian historian and novelist, who lived for many years at Elderfield House; John Keble, religious reformer, who was Vicar of Otterbourne from 1836 until his death in 1866; William Cobbett, social reformer, was a frequent visitor and designed the gardens at Otterbourne House; and last but not least, Sir Isaac Newton, philosopher and scientist, who lodged at Cranbury House for 7 years.

The shape of Otterbourne appears to have remained generally the same until the end of the Napoleonic Wars when major changes took place stemming from necessary improvements in transportation. The Itchen Navigation, remains of which can be seen between Allbrook and Otterbourne, had already been built to serve the wool trade and passage of other goods between Winchester and Southampton. Then a more efficient road system was required to serve the stagecoaches, which were becoming the main form of long distance travel. Charlotte Yonge recorded the hazards of coaches fording the Itchen at Brambridge. The present main road is more or less on the line of a turnpike road that was eventually constructed along with a chain of coaching inns of which "The White Horse" was one. Gradually the centre of Otterbourne gravitated from the old village in Kiln Lane to its present position. Very little of the old village remains.

The late 20th Century saw significant changes to the village with the M3 motorway removing much of the through traffic. However, housing development saw the village double in size in the mid 1980's and the creation of the incinerator plant, latterly becoming the recycling facility in Poles Lane, has more than replaced the reduced traffic advantages created by the M3 motorway.

Today Otterbourne has grown beyond anything our forebears could have imagined, but it still remains a village: there is a village church and a thriving primary school; there are pubs, small businesses, a shop and a Post Office; the Village Hall which serves many different organisations and activities and a recreation ground.

Map of Otterbourne Village



Your Parish Councillors

See Parish Website for up-to-date Councillor Contact Details

<http://www.otterbourneparishcouncil.org/>

Parish Council

Parish Council Meetings

There are seven Parish Council Meetings per annum held on the third Tuesday of the month at 7:30 pm in the Bianchi Room of Otterbourne Village Hall. Notice of the meeting and an Agenda is posted on the village notice boards a week in advance and members of the public are welcome to attend. The Parish Annual Assembly takes place on a separate date in April or May and Parishioners are notified by a Newsletter delivered to all residences. The Chairs of the various Committees present their reports for the year together with the Parish accounts. Visiting guest speakers are often invited and everyone is welcome to attend to find out what has been happening in the village.

Website

Further information about the Parish Council including Minutes of meetings can be found on the Parish Council Website: <http://www.otterbourneparishcouncil.org/>

Parish Magazine

This monthly magazine is produced by the church and keeps you informed of forthcoming events and other developments within the church and the village. Also, it contains reports of Parish Council Meetings. The magazine is available for purchase from Williams Garage in the centre of the village and also for delivery on annual subscription, details of which can be found in the magazine.

Parish Plan and Village Design Statement

At the end of 2004, the Parish Council published the Otterbourne Parish Plan. This plan was developed from responses to a detailed questionnaire delivered to 600 households and businesses in the Parish. Similarly, in 2008 a Village Design Statement was produced and sent to each household. These documents form the basis for the Council's decisions about the village and are registered with Winchester City Council as supplementary planning documents. Both give a lot of detail about the village and are available on the Parish Council web-site or by request from the Parish Clerk.

Other Village Representatives

County Councillor

Jan Warwick (Con)
The Old Vicarage, Hursley, Winchester SO21 2JW
Tel: 01962 775840 email: jan.warwick@hants.gov.uk

District Councillor

Jan Warwick (Con)
The Old Vicarage, Hursley, Winchester SO21 2JW
Tel: 01962 775840 email: jwarwick@winchester.gov.uk

District Councillor

Eleanor Bell (Lib-Dem)
6 Heathcote Place, Hursley, Winchester SO21 2LH
Tel 01962 775521 email: ebell@winchester.gov.uk

District Councillor

Brian Laming (Lib-Dem)
18 Wheatland Close, Badger Farm, Winchester SO22 4QL
Tel 01962 862487 email: blaming@winchester.gov.uk

Member of Parliament

Steve Brine MP (Con - Winchester)
House of Commons, Westminster, London SW1A 2PW
e-mail: brines@parliament.uk

Parish Church

St Matthew's, Otterbourne with Allbrook, Main Road, Otterbourne
Rector: Rev William Prescott. The Rectory, Kiln Lane, Otterbourne, Winchester, SO21 2EJ
Tel: 01962 913400 e-mail: prescott@guernsey.net
Benefice Administrator: Elise Gibbs Tel: 01962 712640

Parish Hall

The Village Hall is the centre for many village events and is available for private hire. It is located in Cranbourne Drive, adjacent to the primary school.
Bookings: Mr Terry Revell Tel: 01962 711725
Website: <http://www.otterbournevillagehall.org.uk/>

Other Spiritual Organisations

St Matthew's is the only Christian place of worship in the village, but numerous Anglican, Roman Catholic and Free Churches are located in Winchester and Chandler's Ford. Other religious and spiritual groups are similarly well-catered for in the surrounding areas. Details can be found under Places of Worship in Yellow Pages.

Health

General Practitioners

The Surgery, Hazeley Road, Twyford (and Pharmacy/Chemist)	01962 712906
The Surgery, 45 Spring Road Colden Common	01962 712906
Fryern Surgery, Oakmount Road, Chandler's Ford	02380 273252
Park Surgery, Hursley Road, Chandler's Road	02380 267355
Brownhill Surgery, 2 Brownhill Road, Chandler's Ford	02380 25 2188

Hospitals (Accident and Emergency)

Royal Hampshire County Hospital, Romsey Road, Winchester	01962 863535
Southampton General Hospital, Tremona Road, Southampton	02380 777222

Dentists

Smile Dental Care, 17 Oakmount Rd, Chandler's Ford	02380 263026
Hursley Rd Dental Practice, 157 Hursley Rd, Chandler's Ford	02380 267141
Westgate Dental Clinic, 18A Upper High St, Winchester	01962 623456

Vets

Chandler's Ford Veterinary Surgery, 47a Winchester Rd, C/Ford	02380 252543
Stable Close Veterinary Clinic, Stable Close, St. Cross Rd, Winchester	01962 840505

Local Shops, Facilities and Garden Centres

Williams Garage, Post Office and Shop (Budgens), Main Road	01962 712169
Guillaume Vappereau Hair Salon, Main Road	01962 713339
Bare Necessities Urban Spa and Beauty Treatments, Main Road	01962 713111
Head N Hair, Station Terrace, Shawford	01962 715571
Twyford Stores and Post Office, Twyford Road, Twyford	01962 712168
The Bean Below Café/Restaurant, at Twyford Stores	01962 711353
Brambridge Stores, Church Lane, Brambridge	01962 714717
Hursley Stores and Post Office, Hursley Road, Hursley	0845 7223344
Hursley High Class Butchers	01962 775599
Brambridge Garden Centre, Gift Shop and Restaurant , Kiln Lane	01962 713707
George Beckett Nurseries, Otterbourne Road, Compton	01962 713732

Oliver's Battery Shops
General Stores, Post Office, Hairdressers, Butchers, Cycle Shop, Baby Shops, Pet Shop

Education

Pre-school

Otterbourne Toddler Group: Mrs Debbie Milne 02380 260910
Compton and Shawford Pre-School: Term-time 01962 717585

Primary

Otterbourne Church of England Primary School
Main Road, Otterbourne SO21 2EQ
Admin: admin@otterbourne.hants.sch.uk 01962 712020
<http://www.schools.hants.org.uk/Otterbourne/>

Chiltern Tutorial School for dyslexic children (Private)
Otterbourne Village Hall, Cranbourne Drive, Otterbourne
<http://www.chilterntutorial.co.uk/pages/contact.htm> 01962 860482

Secondary

Thornden School
Winchester Road, Chandler's Ford SO53 2DW
Admin: 02380 269722
<http://www.thornden.hants.sch.uk/>

Kings' School Winchester
Romsey Road, Winchester SO22 5PN
Admin: 01962 861161
<http://www.kings-winchester.hants.sch.uk/index.htm>

Sixth Form

Barton Peveril College
Chestnut Avenue, Eastleigh SO50 5ZA
Admin: 02380 367200
<http://www.barton-peveril.ac.uk/homepage.htm>

Peter Symonds College
Owens Road, Winchester SO22 6RX
Admin: 01962 852764
<http://www.psc.ac.uk/>

Police and Neighbourhood Watch

Non-emergency: <http://www.hampshire.police.uk/> 101
PS 24191 Bethan Wood bethan.wood@hampshire.pnn.police.uk Ext 4635125

Neighbourhood Watch Co-ordinator – Cllr John Romero 01962 713864
Email: tangerin511@gmail.com

Post Office

Williams Garage Post Office, Main Road, Otterbourne

01962 712169

Public Transport

Buses through Otterbourne

Solent Blue Line
<http://www.solentblueline.com/>

02380 618233

Winchester to/from Southampton via Chandler's Ford
The Blue Star No.1 service runs every 15 mins Monday-Saturday daytime. Sunday daytime every 30 minutes. All evenings every 60 minutes.

Winchester to/from Eastleigh
Wheelers E1 and E2 orange bus service runs every hour. It goes past the Royal Hampshire County Hospital (RHCH), where car parking is limited. The E2 service runs through Colden Common and Twyford and serves the Doctors' surgeries there.

Park and Ride

There are two Park and Ride facilities serving Winchester, the train station and the RHCH.
South Winchester: located off the Otterbourne Road towards Winchester just off the M3 Junction 11 roundabout
St Catherine's: on the east side of Winchester at Garnier Road

Trains

For trains to/from London Waterloo and the South West consult
National Rail Enquiries <http://www.nationalrail.co.uk/>

0845 7484950

Trains operate through stations in Eastleigh, Winchester and Shawford (restricted service).
A branch line between Eastleigh, Romsey and Southampton operates through Chandler's Ford station.

Sport & Recreation

Otterbourne has its own recreation ground, children's playground, youth facilities, pavilion and football pitch located off Oakwood Avenue.

Otterbourne Cricket Club, Chairman: Mike O'Brien
Junior and Senior cricket played on grounds at Southern Water

02380 771847

Otterbourne Golf Centre, Poles Lane, Otterbourne
9 hole course and driving range

01962 775225

Leisure Centres, gyms and swimming pools:
River Park Leisure Centre, Gordon Road, Winchester
Fleming Park Leisure Centre, Passfield Avenue, Eastleigh

01962 848700

02380 684800

Walks

There are a number of local walks through both open countryside and woodland habitat. The close proximity of the Itchen footpath along the old Itchen Navigation makes possible longer walks to Winchester and beyond in one direction and Southampton in the other. Maps of the local footpaths are displayed on notice boards at the Recreation Ground and on Cranbourne Drive near the Village Hall and School together with a suggested circular walk of Otterbourne Parish.

Libraries

Chandler's Ford Library, Oakmount Road, Chandler's Ford 02380 267393
<http://www.hants.gov.uk/library/chandlers-ford/>

Winchester Discovery Centre, Jewry Street, Winchester 01962 862748
<http://www3.hants.gov.uk/wdc.htm>

A mobile Library service is available which stops once a month on Fridays at Coles Mede between the hours of 0940 and 1010. See Parish notice boards for dates or contact Chandler's Ford Library
<http://www.hants.gov.uk/library/mobilelibraries/14chandlersford.htm>

Recycling and Civic Amenity Sites

Woodside Road, Eastleigh 02380 644106

Bar End, Winchester (off Junction 10 of the M3) 01962 868523

Local Clubs & Societies

1st Allbrook Brownies, Mrs J Kinch 02380 619130

1st Allbrook Guides, Miss F Smith 07769 850574

15th Chandlers Ford Scout Group, Mr P Kelly (Beavers, Cubs, Scouts) 02380 262479

Otterbourne Women's Institute, Carol Thorne (Admin) 02380 276716

Otterbourne Flower & Garden Club, Carol Bailey (Chairman) 02380 275358

Otterbourne Conservation Group, Valerie Etteridge (Chair) 01962 714311

Otterbourne Allotments Association, Ron Emery (Chairman) 02380 274256

Otterbourne Hill Friday Club, Mrs I Spreadbury 02380 618609

Cameo Club, Mrs Valerie Etteridge 01962 714311

Sapphire Club (over 60s social) Cllr Chris Barton-Briddon (Secretary) 01962 714839

Nearby Supermarkets and Large Stores

Sainsburys: Badger Farm (go through Compton and turn left at traffic island towards Oliver's Battery)

Tesco: Winnall Trading Estate (off M3 Junction 9 Winchester)

Waitrose: Chandler's Ford (turn left at first set of traffic lights in Chandler's Ford)
Weeke (located on the Stockbridge Road)

Lidl: Weeke (located on Stockbridge Road)

Co-operative: Chandler's Ford (on right after first set of traffic lights in Chandler's Ford)

ASDA: Chandler's Ford (through Chandler's Ford towards Southampton – off large traffic island)

Marks & Spencer and Sainsburys: Hedge End (off M27 Junction 7)

Winchester: The city centre has a good range of chain stores and there are household and DIY outlets on the Winnall Trading Estate off M3 Junction 9.

Southampton: The city has a larger range of stores than Winchester and The Quays shopping centre has most well known stores.

Hedge End: (off M27 Junction 8) As well M & S and Sainsburys this area has many major household and DIY stores

Eastleigh: The Swan Centre has a good range of well known stores and there is a Lidl Supermarket near the railway station.

Local Attractions.

Marwell Zoo: Marwell near Colden Common.

Sir Harold Hillier Gardens: Ampfield near Romsey

Both these establishments are within a few minutes drive and have café/restaurant facilities. Entry is not required for the café at Hillier Gardens. They both offer annual membership, which make short visits attractive giving good value for money if used frequently. Small children go free up to certain ages. More details are available on their websites